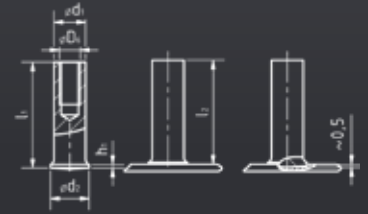


KÖCO IS

DIN EN ISO 13918

Short-cycle drawn arc tapped stud with flange

■ Type, material and surface coating upon request



d_1	l_1	h_2	h_1	Part-no.	Mass kg/100	Chuck
3	8	4	0,7 – 1,4	Upon request.		350-0001-000
	10					
	12					
	16					
	20					
4	8	5	0,7 – 1,4	Upon request.		350-0002-000
	10					
	12					
	16					
	20					
5	8	6	0,7 – 1,4	Upon request.		350-0003-000
	10					
	12					
	16					
	20					
6	8	7	0,7 – 1,4	Upon request.		350-0005-000
	10					
	12					
	16					
	20					
7,1	16	9	0,8 – 1,4	Upon request.		350-0006-000
	20					
	25					
8	16	9	0,8 – 1,4	Upon request.		350-0007-000
	20					
	25					
	30					
	35					
	40					

l_2 depends on l_1 and the welding energy.

